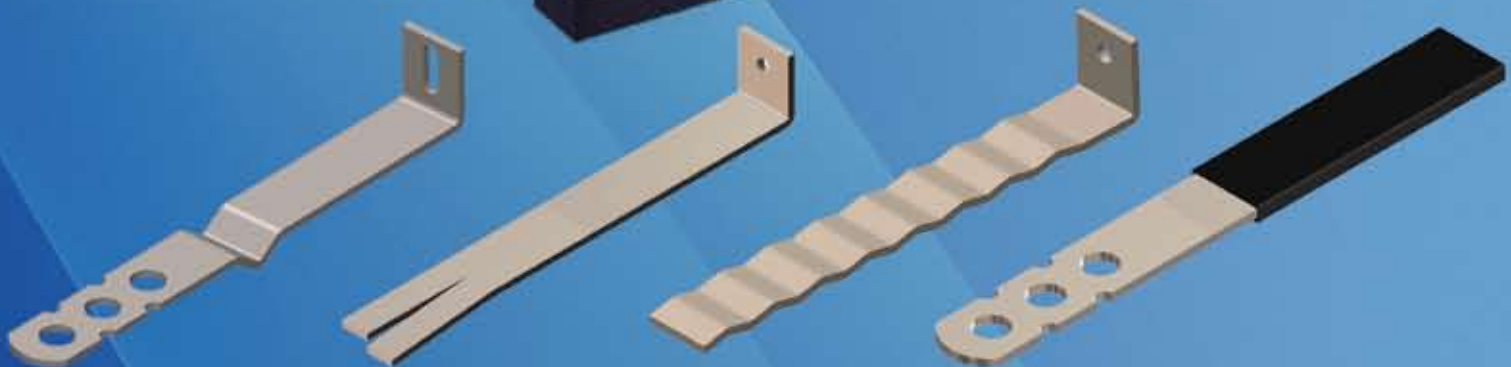


TMI

Wall Ties & Restraint Fixings





Technical Metal Industrial Co. L.L.C.

Tel: +971 (2) 5502025
Fax: +971 (2) 5502024
P.O. Box: 41558
Abu Dhabi

Tel: +971 (3) 7224768
Fax: +971 (3) 7224769
P.O. Box: 99155
Al Ain

Tel: +971 (4) 8858036
Fax: +971 (4) 8858658
P.O. Box: 86029
Dubai

Tel: +971 (7) 2282332
Fax: +971 (7) 2282232
P.O. Box: 33239
Ras Al khaimah

E-mail: tmi@tmico.ae Website: www.tmi-co.com

Table of **CONTENTS**

Introduction	3
Frame Cramps	5
Movement Ties	6
Cavity Wall Ties	7
Overhead Restraints	9
Channels	11
Dove Tail Anchor channels	12
Sliding Anchor Systems	13
Wall Ties Guide	14
Technical Specifications	15
Storage Conditions	15

Introduction

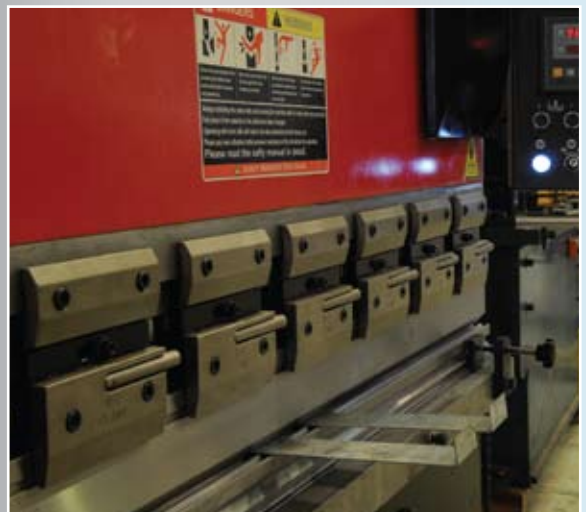
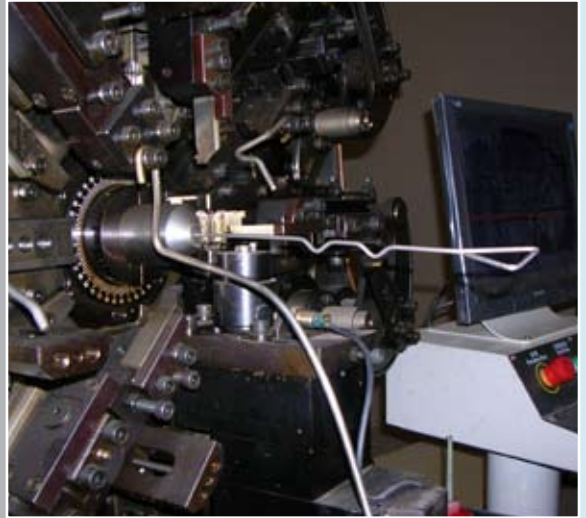
TMI has been in the business of manufacturing and supplying a wide range of building accessories for the construction industry since 1997. With continued process improvement and new innovative product development, *TMI* is proud to deliver any quantity of its high quality and great valued products, with excellent service and punctuality to its customers.



TMI is well equipped for manufacturing wall ties and meeting any challenge in the construction industry. *TMI* manufactures a wide range of wall ties in galvanized steel and stainless steel of grades S304 and S316.

The range of *TMI*'s accessories from the standard ties, to its specialty, the custom designed ties are available to suit most engineering applications such as masonry to masonry, masonry to concrete, masonry to overhead structure and masonry to steel structures.

All wall tie's manufacturing complies with BS EN 845-1:2003 (formerly BS 1243). A quick quotation and prompt delivery is available from stock of standard tie. As for our custom designed ties, an advanced information submittal is required for quick deliveries.



Frame Cramps

Application

Frame cramps are designed to restrain the masonry with the new or existing vertical structure.

Fixing

The Ø6mm hole (as in LPS) or 6mmx18mm slot (as in LPT) in the standard 30mm upstand (other upstand height available upon request) is provided for attaching the frame cramp to the vertical structure and the other end is embedded to the masonry.

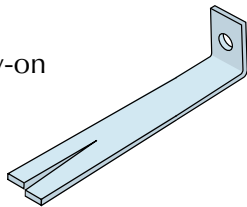
Length mm	Width mm	Thickness mm	Qty./Box Piece
75	20 up to 50	1.5/2.0/2.5/3.0	250
100	20 up to 50	1.5/2.0/2.5/3.0	250
125	20 up to 50	1.5/2.0/2.5/3.0	250
150	20 up to 50	1.5/2.0/2.5/3.0	250
175	20 up to 50	1.5/2.0/2.5/3.0	250
200	20 up to 50	1.5/2.0/2.5/3.0	250
225	20 up to 50	1.5/2.0/2.5/3.0	250
250	20 up to 50	1.5/2.0/2.5/3.0	250



- * Custom designs are available upon request.
- * Material - Galvanized, Stainless steel, mild steel.
- * Finish - Hotdip galvanized, Powder coated

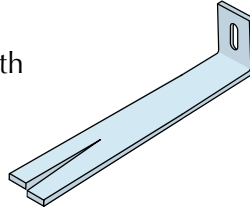
LSS

L-Bolt/Screw-on Split End



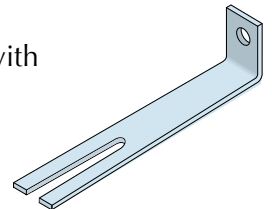
LSS-ST

L-Slot tie with Split-end



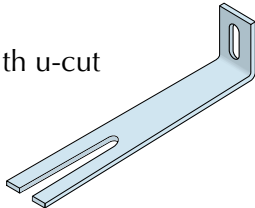
LBT

L-Bolt tie with u-cut end



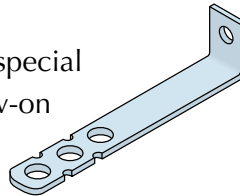
LST

L-Slot tie with u-cut end



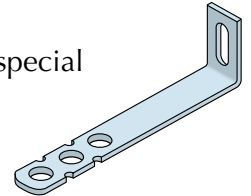
LPS-S

L-Perforated special tie bolt/screw-on



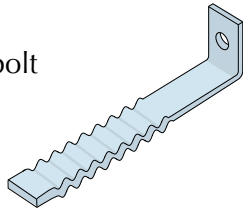
LPS-ST

L-Perforated special slot tie



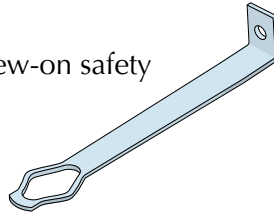
CGWT

Corrugated bolt wall tie



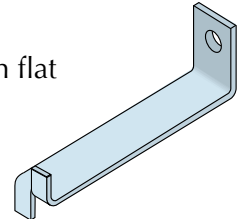
LSSF

L-Bolt screw-on safety



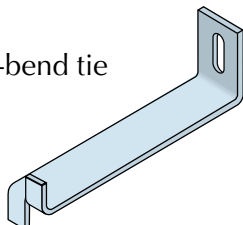
LSSB

Bolt screw-on flat split-bend tie



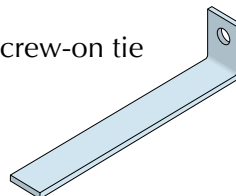
LSSB-ST

Slot flat split-bend tie



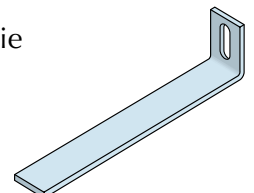
LPS

L-Plain bolt/screw-on tie



LPT

L-Plain slot tie



Movement Ties

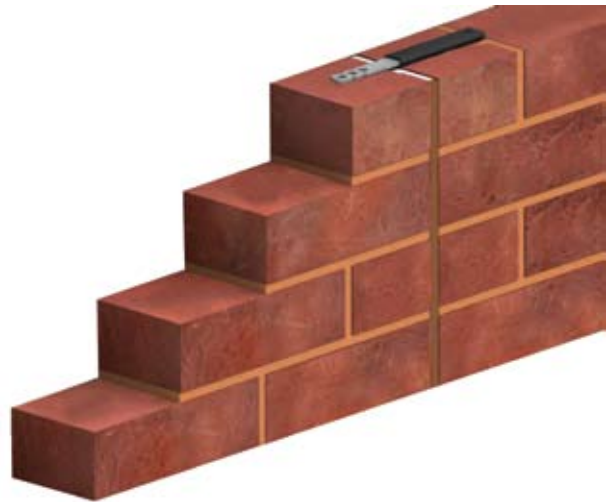
Application

Movement ties are designed to restrain masonry against lateral wind loads, allowing a horizontal expansion or contraction. Movement ties are used where masonry restrained to steel work and in long span masonry where movement joints are required.

Fixing

Movement ties are held in the brick or block work. The debonding sleeve provided on plain end of the tie will serve to allow the movement. *TMI* recommends the debonding sleeve to be installed with a gap of 10mm at the end to allow for expansion or contraction.

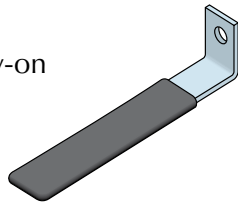
Length mm	Width mm	Thickness mm	Qty./Box Piece
75	25 up to 30	1.5/2.0/2.5	250
100	25 up to 30	1.5/2.0/2.5	250
125	25 up to 30	1.5/2.0/2.5	250
150	25 up to 30	1.5/2.0/2.5	250
175	25 up to 30	1.5/2.0/2.5	250
200	25 up to 30	1.5/2.0/2.5	250
225	25 up to 30	1.5/2.0/2.5	250
250	25 up to 30	1.5/2.0/2.5	250



- * Custom designs are available upon request.
- * Material - Galvanized, Stainless steel, mild steel.
- * Finish - Hotdip galvanized, Powder coated

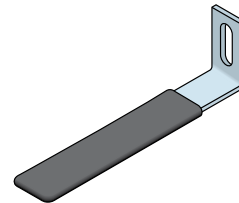
LPSW

L-plain tie bolt /screw-on with sleeves



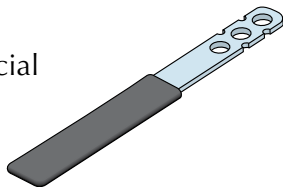
LPSW-ST

L-Plain tie slot with sleeves



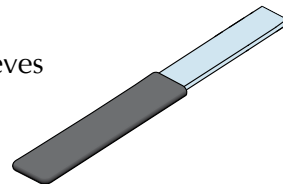
PTSW

Perforated tie special with sleeves



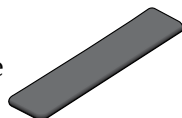
FTSW

Flat tie with sleeves



DBS

Debonding sleeve



- * Debonding sleeve is supplied according to tie measurement.

Cavity Wall Ties

Application

These products are designed to secure two masonry of a cavity wall, allowing them to act as one structure.

Fixing

The tie made of strip (as in FCWT) or wire (as in WTB) is embedded in the inner and outer masonry. Ties having a $\varnothing 6.0$ mm hole or 6mmx18mm slot in the standard 30mm upstand (as in CWT) will be fixed to the existing vertical structure and the other end is embedded to the outer masonry. The drip feature of the tie can be fabricated according to customer requirements, and should be pointed downside during installation to prevent the moisture from crossing between the masonry.

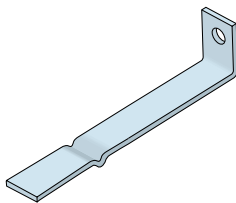
Strip

Length mm	Width mm	Thickness mm	Qty./Box Piece
150	20 up to 50	1.5/2.0/2.5/3.0	250
175	20 up to 50	1.5/2.0/2.5/3.0	250
200	20 up to 50	1.5/2.0/2.5/3.0	250
225	20 up to 50	1.5/2.0/2.5/3.0	250
250	20 up to 50	1.5/2.0/2.5/3.0	250
300	20 up to 50	1.5/2.0/2.5/3.0	250

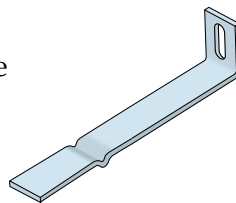
* Custom designs are available upon request.



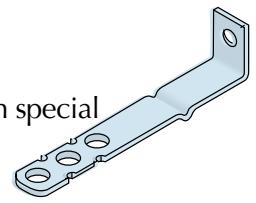
CWT
Cavity wall tie
bolt/screw-on



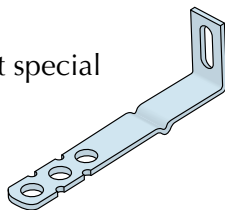
CWT-ST
Cavity slot tie



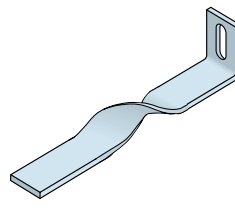
LPS-SC
L- Perforated
bolt/screw-on special
cavity tie



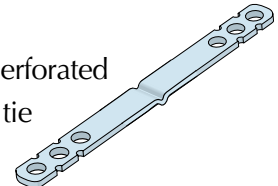
LPS-STC
L-Perforated slot special
cavity tie



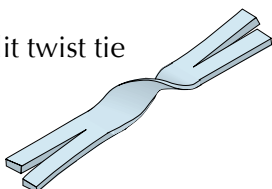
LS-T
L-Slot
tie with twist



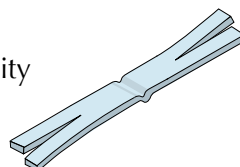
PCWT
Two Side perforated
cavity wall tie



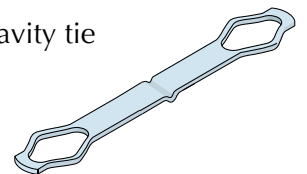
FS2F
Two side split twist tie



FCWT
Flat two side
split end cavity
wall tie



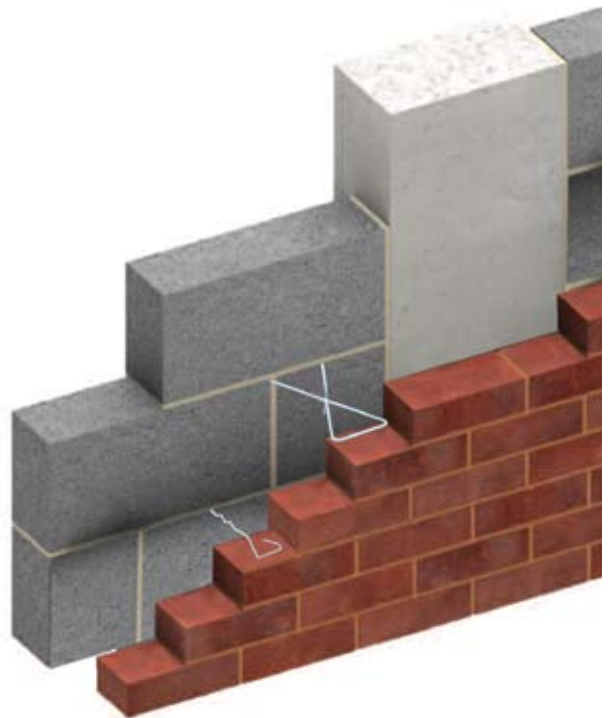
SCT
Safety cavity tie



Wire

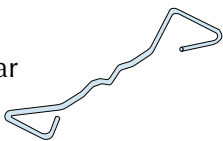
Reference	Length mm	Diameter mm	Qty./Box Piece
DTW-SD	150/200/250/300	3.0/ 3.5	250
DTW-DD	150/200/250/300	3.0/ 3.5	250
WTZ	150/200/250/300	4.0/ 5.0/6.0	250
WTB	150/200/250/300	3.0/ 3.5	250
ZWT	150/200/250/300	3.0/ 3.5	250

- * Custom designs are available upon request.
- * Material - Galvanized, Stainless steel, mild steel.
- * Finish - Hotdip galvanized, Powder coated



DTW-SD

Double triangular wire tie single drip



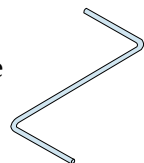
DTW-DD

Double triangular wire tie double drip



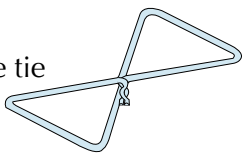
WTZ

Z-Shape Wire tie



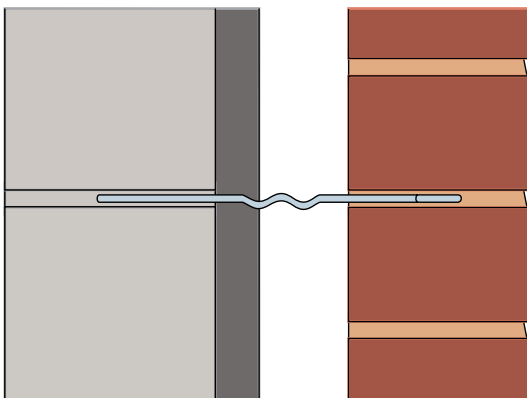
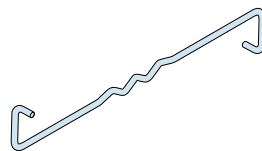
WTB

Butterfly wire tie



ZWT

Z-Wire Tie



Embedment Length of Tie

The tie should be of perfect length so that it should be properly embedded in masonry. *TMI* suggest a minimum embedment of 50 percentage in each block.

Overhead Restraints

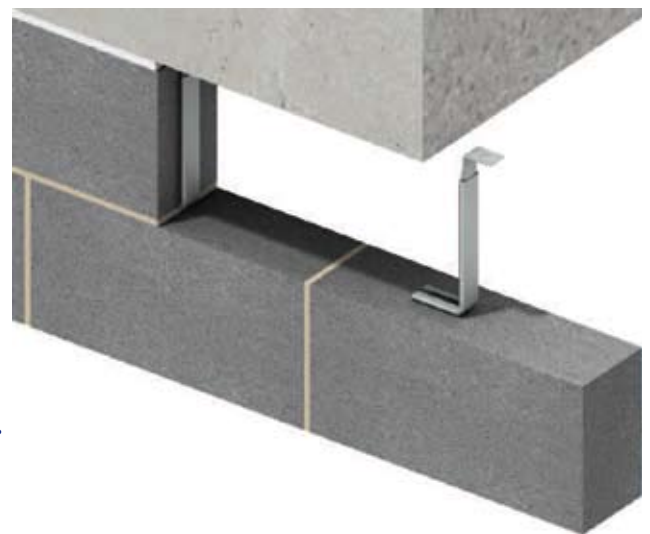
Application

Overhead restraints are designed for restraining the free standing wall with the overhead structure. The sliding tie is fixed to the overhead structure to arrest side movements. The shrinkage or thermal movement of the wall can be absorbed by the vertical movement of the sliding tie.

Fixing

The sliding tie is provided with a $\varnothing 6\text{mm}$ hole (as in VM1, VHM-ST1) or 6mmx18mm slot (as in VM2, VHM-ST2) as a standard for fixture to the overhead structure. The other end is held between the brick or block work.

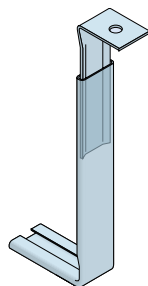
Reference	Length mm	Width mm	Thickness mm	Qty./Box Piece
VM	200	35	1.5	250
VM-ST	200	35	1.5	250
VHM	200	35	1.5	250
VHM-ST	200	35	1.5	250
WTCW	150/200/250	25	1.5/2.0/2.5/3.0	250



- * Table Shows details about sleeve. Tie will be supplied accordingly to sleeve design.
- * Custom designs are available upon request.
- * Material - Galvanized, Stainless steel, mild steel.
- * Finish - Hotdip galvanized, Powder coated

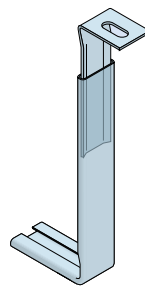
VM1

Vertical movement tie bolt screw-on



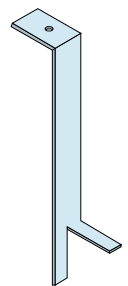
VHM-ST1

Vertical horizontal movement tie slot



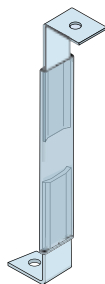
WTCW

Ceiling wall strap tie



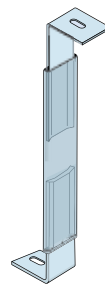
VM2

Vertical movement tie bolt screw on



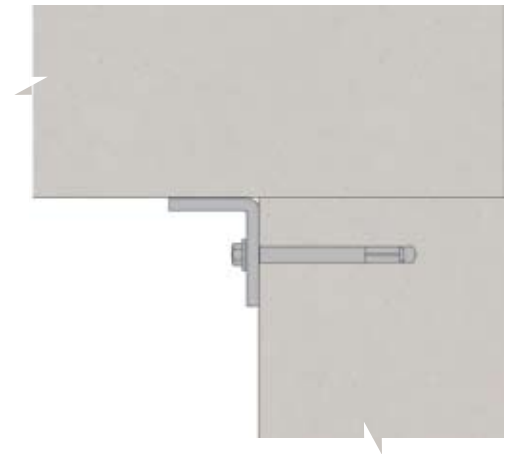
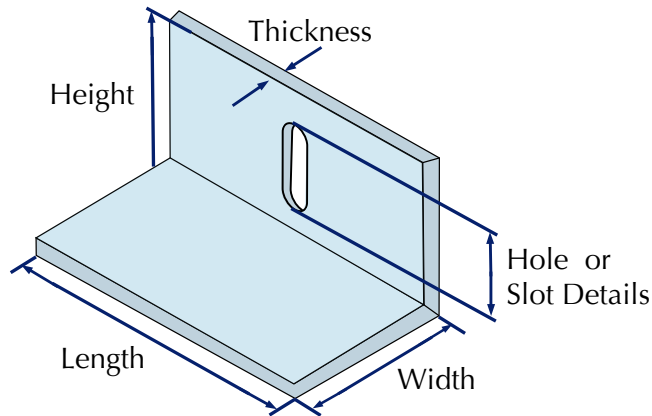
VHM-ST2

Vertical horizontal movement tie slot



Anchor Plates

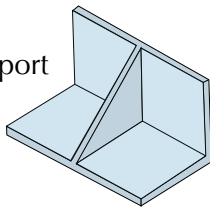
Different anchor plates are also available as a simple and economical head restraint system. Anchor Plates are used to attach structural members to concrete structure. Anchor plates and angles can be used to frame openings in concrete walls or as shelf angles.



- * Custom designs are available upon request.
- * Material - Galvanized, Stainless steel, mild steel.
- * Finish - Hotdip galvanized, Powder coated

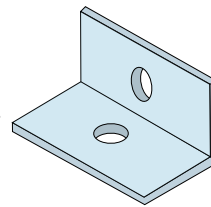
AWS

Anchor with support



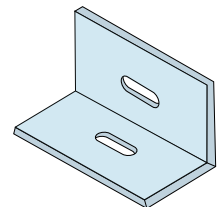
ASP2

2 Side screwed punched anchor.



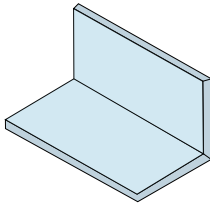
AH-2ST

2 Side slot anchor horizontal



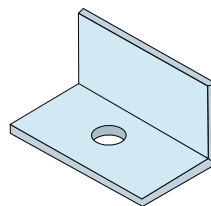
AP

Plain anchor



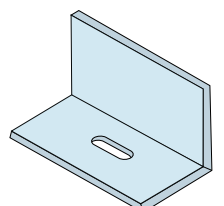
ABS1

1 Side bolt anchor



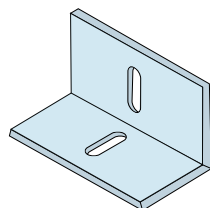
AH-1ST

1 Side slot anchor horizontal



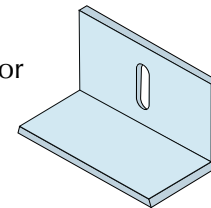
AV-2ST

2 Side slot anchor - vertical



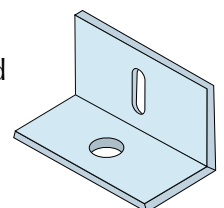
AV-1ST

1 Side slot anchor Vertical



ASB

Bolt / slotted anchor



Channels

Application

This system is designed to join and provide lateral support to the newly formed masonry with the existing vertical structure, that is steel section or concrete.

Fixing

The system consist of channel that is fixed to the vertical structure (steel work or a concrete structure) and the tie which slides vertically in the channel embeded to masonry which provides the necessary restraint. The tie can be supplied with or without rubber sleeves.

Reference	Fixing	Channel Size mm	Available Length mm
OC	Surface Fixing	24x8	100/150/300/3000
DTT	Surface Fixing	30x25	100/150/250

- * Material - Galvanized, Stainless steel, mild steel.
- * Finish - Hotdip galvanized, Powder coated

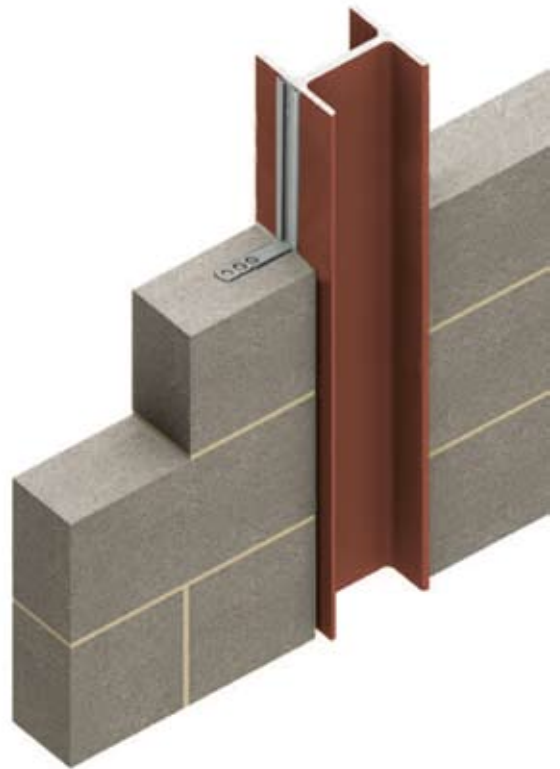
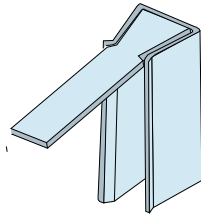
OC

Omega channel



DTT

Dove tail with triangular channel

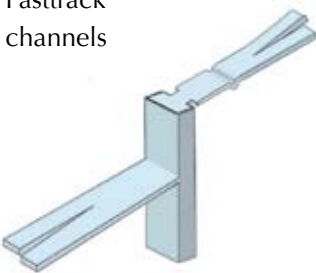


Reference	Fixing	Channel Size mm	Available Length mm
FTC	Surface Fixing	35x14	100/150/300/3000
WTRC	Surface Fixing	35x14	100/150/300/3000

- * Material - Galvanized, Stainless steel, mild steel.
- * Finish - Hotdip galvanized, Powder coated

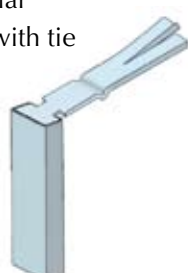
FTC

Fasttrack channels



WTRC

Rectangular channel with tie



Dove Tail Anchor channels

The dove tail Anchor channel is cast-in to the concrete during construction and after setting, the wire or strip tie is mated and embeded to the masonry which provides a support to the structure. The dove tail anchor channel to be furnished with form filler inserts to protect channel from filling with concrete during installation.

Reference	Fixing	Channel Size mm	Available Length mm
DTCV-W	Cast-in	25.4x25.4	3000
DTCV-S	Cast-in	25.4x25.4	3000
DTCH-W	Cast-in	25.4x25.4	3000

- * Wire diameter - Ø4 up to Ø6 .
- * Material - Galvanized, Stainless steel, mild steel.
- * Finish - Hotdip galvanized, Powder coated

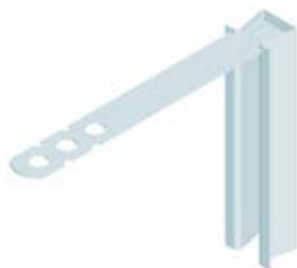
DTCV-W

Dovetail anchor channel vertical with wire Tie



DTCV-S

Dovetail anchor channel vertical with strip Tie



DTCH-W

Dovetail anchor channel horizontal with wire Tie



Sliding Anchor Systems

Application

Sliding anchor system is designed to restrain cavity wall to the overhead structure.

Fixing

The system has a stem fixed to the overhead structure. It accepts ties which slide to accommodate vertical movement.

Stem Specification

Length mm	Width mm	Thickness mm	Qty./Box Piece
300 up to 600	25	4	250

* Head option as shown and can be fabricated according to customer requirements.

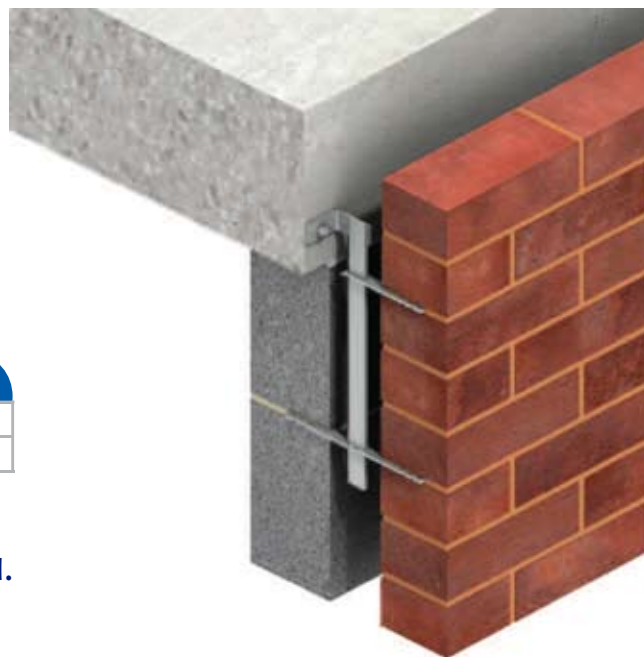
Tie Specification

Reference	Length mm	Width mm	Thickness mm	Qty./Box Piece
SAT-TW	200/250/300	25	2	250
SAT-OW	150	25	2	250

* Other length are available upon request.

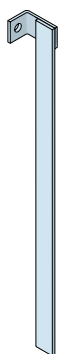
* Material - Galvanized, Stainless steel, mild steel.

* Finish - Hotdip galvanized, Powder coated



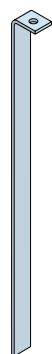
SAS-H1

Sliding Anchor
Stem - Head One



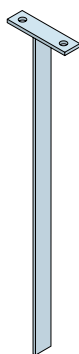
SAS-H2

Sliding Anchor
Stem - Head Two



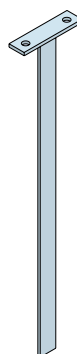
SAS-H3

Sliding Anchor
Stem - Head Three



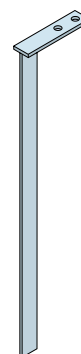
SAS-H4

Sliding anchor
stem - head four



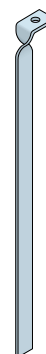
SAS-H5

Sliding anchor
stem - head five



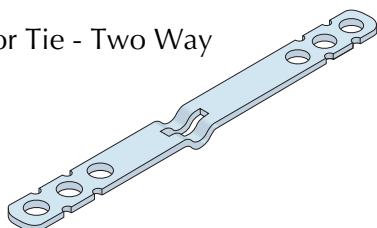
SAS-H6

Sliding anchor
stem - head twist



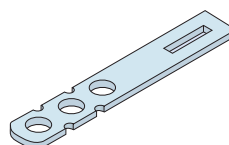
SAT-TW

Sliding Anchor Tie - Two Way



SAT-OW

Sliding Anchor Tie - One Way



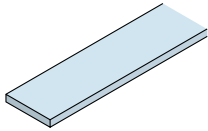
Wall Ties Guide

Different combinations is available from the listed head, body and tail options to suit your practical applications.

Tail Options

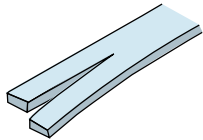
TPE

Plain end



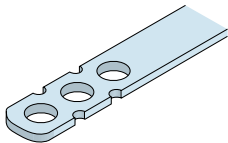
TSE

Split end



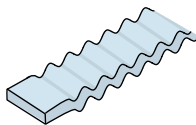
TP

Perforated



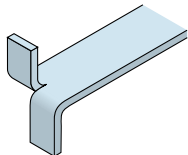
TC

Corrugated



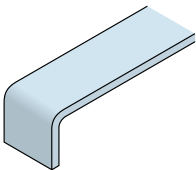
TSB

Split bend end



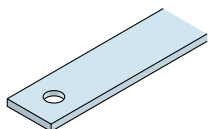
TBE

Bend end



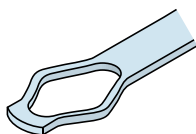
THE

Hole end



TSE

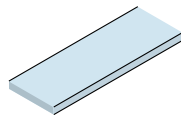
Safety end



Body Options

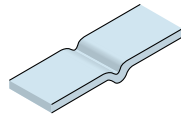
BPE

Plain



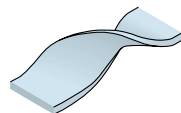
BD

Drip



BT

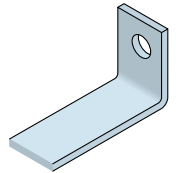
Twist



Head Options

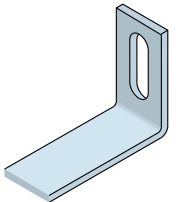
HUH

Upstand with hole



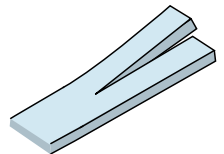
HUS

Upstand with Slot



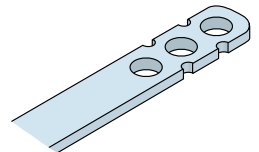
HSE

Split end



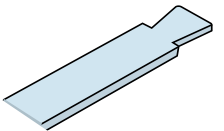
HP

Perforated



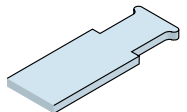
HDT

Dove tail



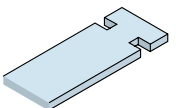
HOP

Obround profile



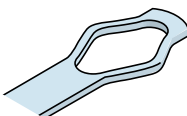
HOP

Rectangular profile



HSE

Safety end



* For placing an order, please provide relevant information to the inquiries below.

Head Option	Body Option	Tail Option	Size	Material	Qty

Technical Specifications

1 - Sheet

- | | |
|--------------------------|---|
| ○ Manufactured | BS EN 845-1:2003 (formerly BS 1243) |
| ○ Pre Galvanized Steel | BS EN 10346:2009 (formerly BS EN 10142:1991)
ASTM A653/A653M |
| ○ Mild Steel | BS EN 10149-3:1996 |
| ○ Hot dipped Galvanizing | BS EN ISO 1461:1999 (formerly BS 729)
ASTM A123/A123M, ASTM A153/A153M |
| ○ Stainless Steel | BS EN 10088-2:2005 (which was direct equivalent formerly
BS 1449:Part 2:1983, grade 304 2B finish)
ASTM A240/A240M in grade 304 2B finish |

2 - Wire

- | | |
|--------------------------|---|
| ○ Manufactured | BS EN 845-1:2003 (formerly BS 1243) |
| ○ Mild steel wire | BS 1052 (1980), BS 4482 (2005) |
| ○ Zinc Plated Wire | BS EN 10244-2:2001 (formerly BS 1706)
ASTM A641/A641M |
| ○ Hot dipped Galvanizing | BS EN ISO 1461:1999 (formerly BS 729)
ASTM A123/A123M |
| ○ Stainless steel wire | BS EN 10088-3:2005 (formerly BS 1554:1990)
ASTM A580/A580M |

Storage Conditions

Please follow the below recommendations for storage Conditions:

- Store in covered and dry area.
- Avoid contact with sand, chemicals & water.



ED 01 - MY 06/10

